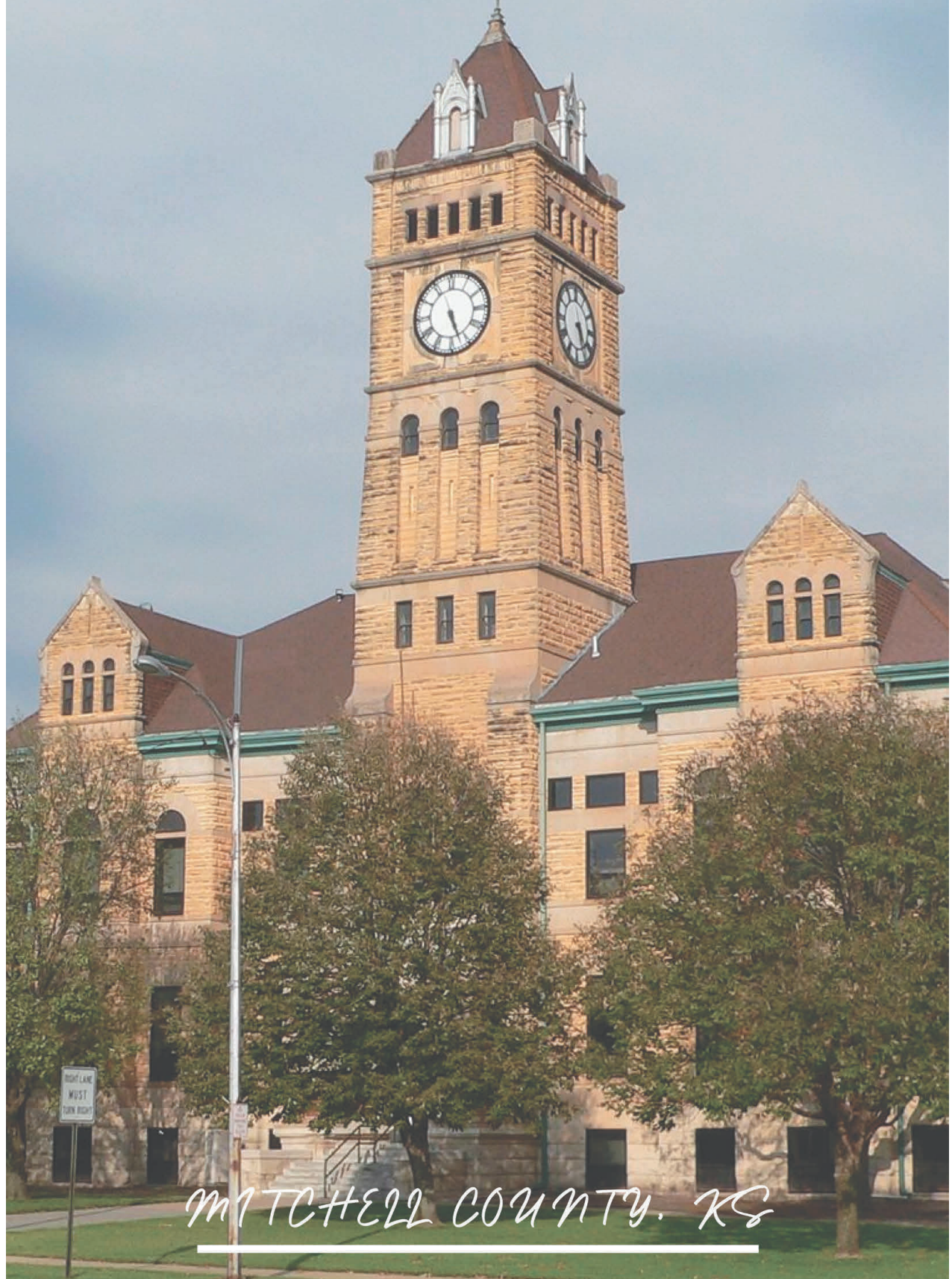


ART OF ATTRACTIONS

COLORING BOOK



MITCHELL COUNTY, KS

Acknowledgements

Created by:

Danielle Riemann

Intern through Dane G. Hansen with Fort Hays
State University

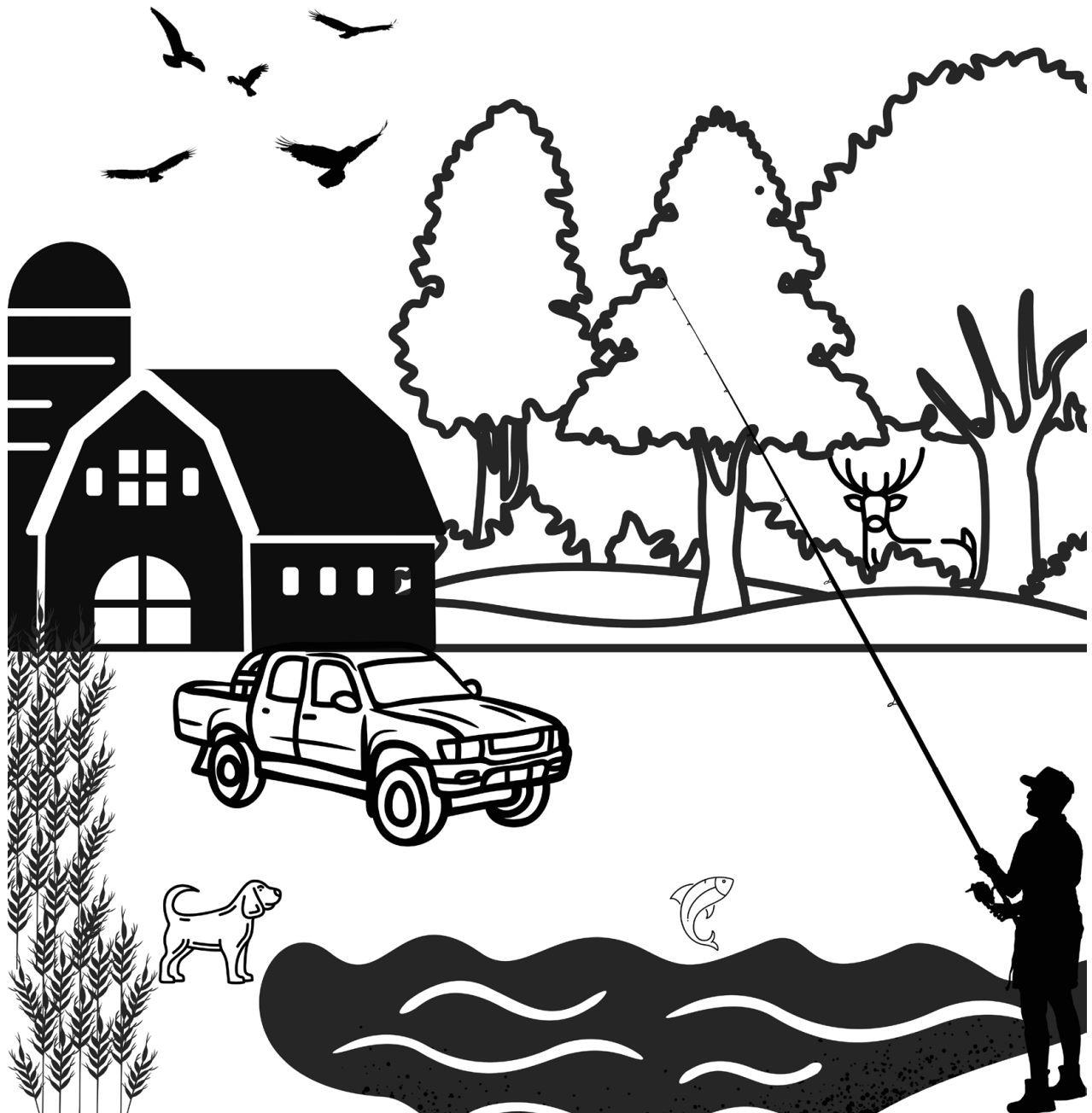
A project for Mitchell County Convention & Tourism in collaboration
with Lucille Heller, Director

Printable copies available at www.visitmcks.com

Created in 2021
for Mitchell County, Kansas

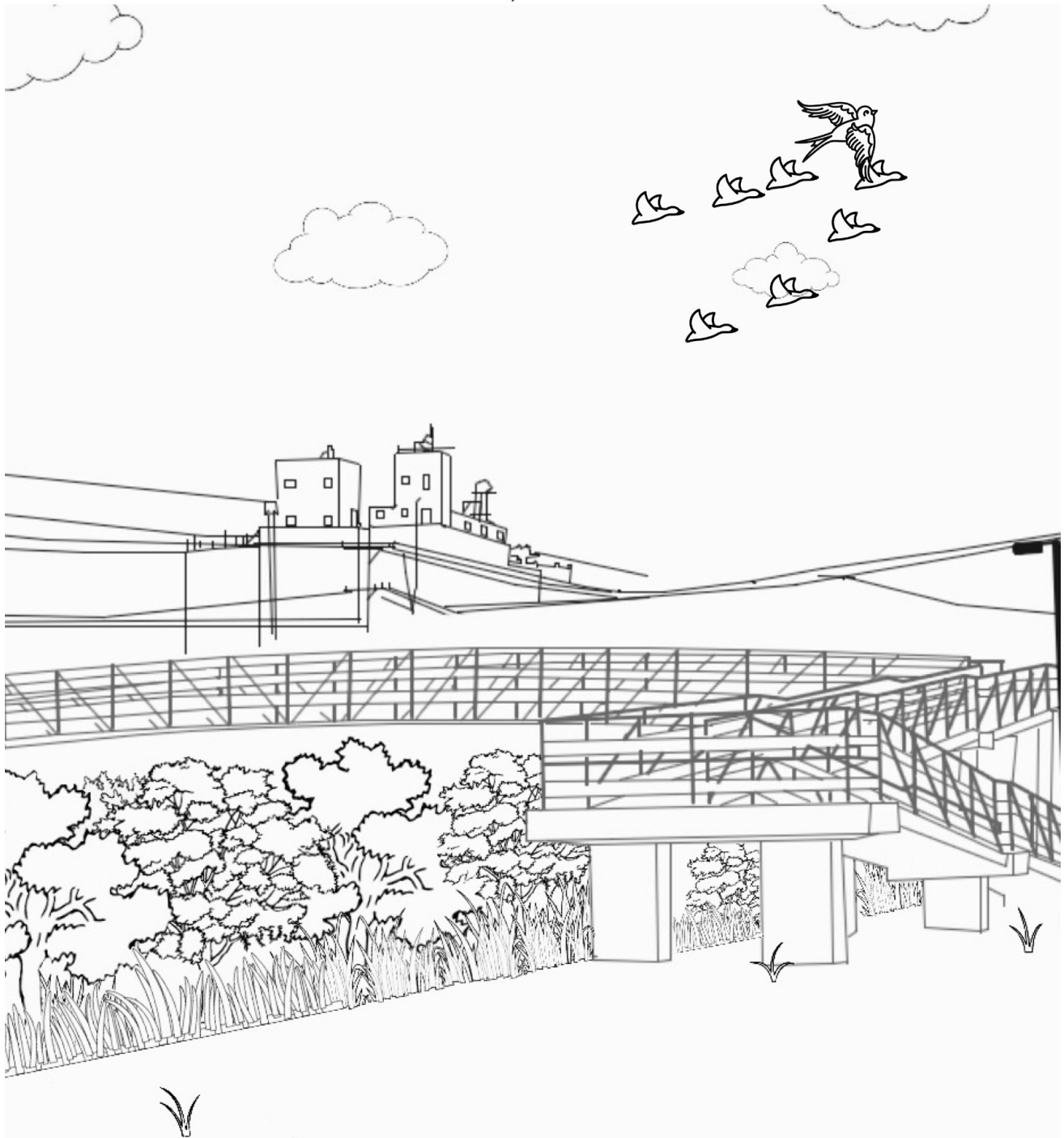
www.visitmcks.com
mckstourism@gmail.com

Mitchell County *Kansas*



Chautauqua Park Bridge

Beloit, Kansas



The construction of the Chautauqua Park Bridge began in 1992. It was built over the Solomon River by the City of Beloit and Black Hills Trucking Company. Over \$36,000 was spent on materials to build the bridge.



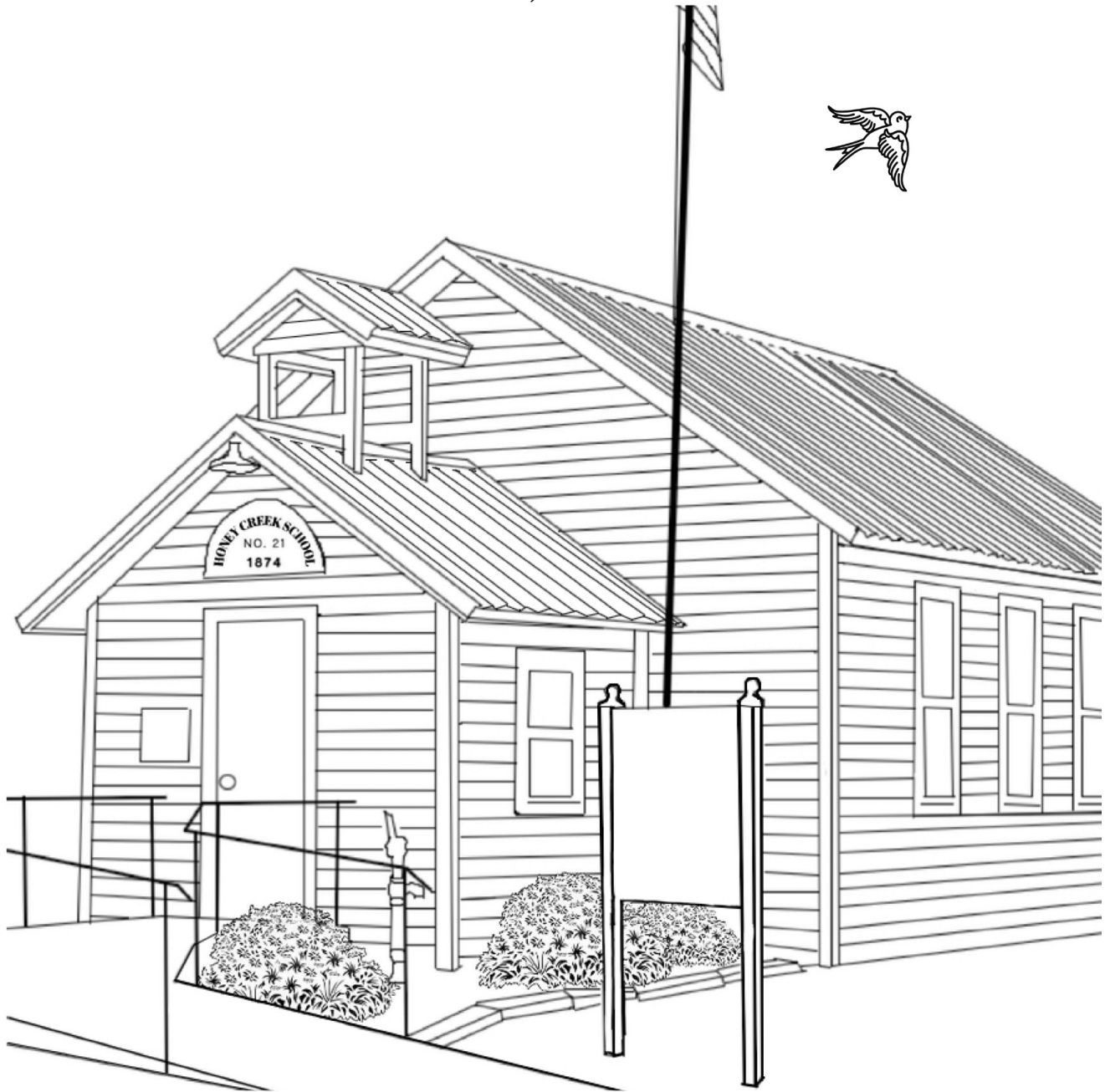
Providing comprehensive and comfortable family dental care.

Dr. Jetta Holloway-Jankowski and Dr. Tim Jankowski

DENTALDESIGNS 208 S Mill in Beloit - DentalDesignsofSV.com - 785-738-3758

Little Red School House

Beloit, Kansas



The Honey Creek School was originally located southeast of Glen Elder and burned to the ground in 1942. It was then rebuilt and in use until 1961. In 1970 it was decided that Beloit should have one of these “One-Room” schoolhouses, so the Honey Creek Schoolhouse was moved to its current location at the roadside park on Highway 24.



Stay with us While You Explore North Central Kansas!

Located on Hwy 24 in Beloit - 785-738-4300 - wyndhamhotels.com

St. John's Catholic Church

Beloit, Kansas



In 1900 the foundation of the Saint John's Catholic Church was built around the structure of the previous church building, which was later torn down in 1901. Built in the form of a Latin cross, the post rock limestone church was completed in 1904. It has a seating capacity of 800 and is listed on the National Register of Historic Places.



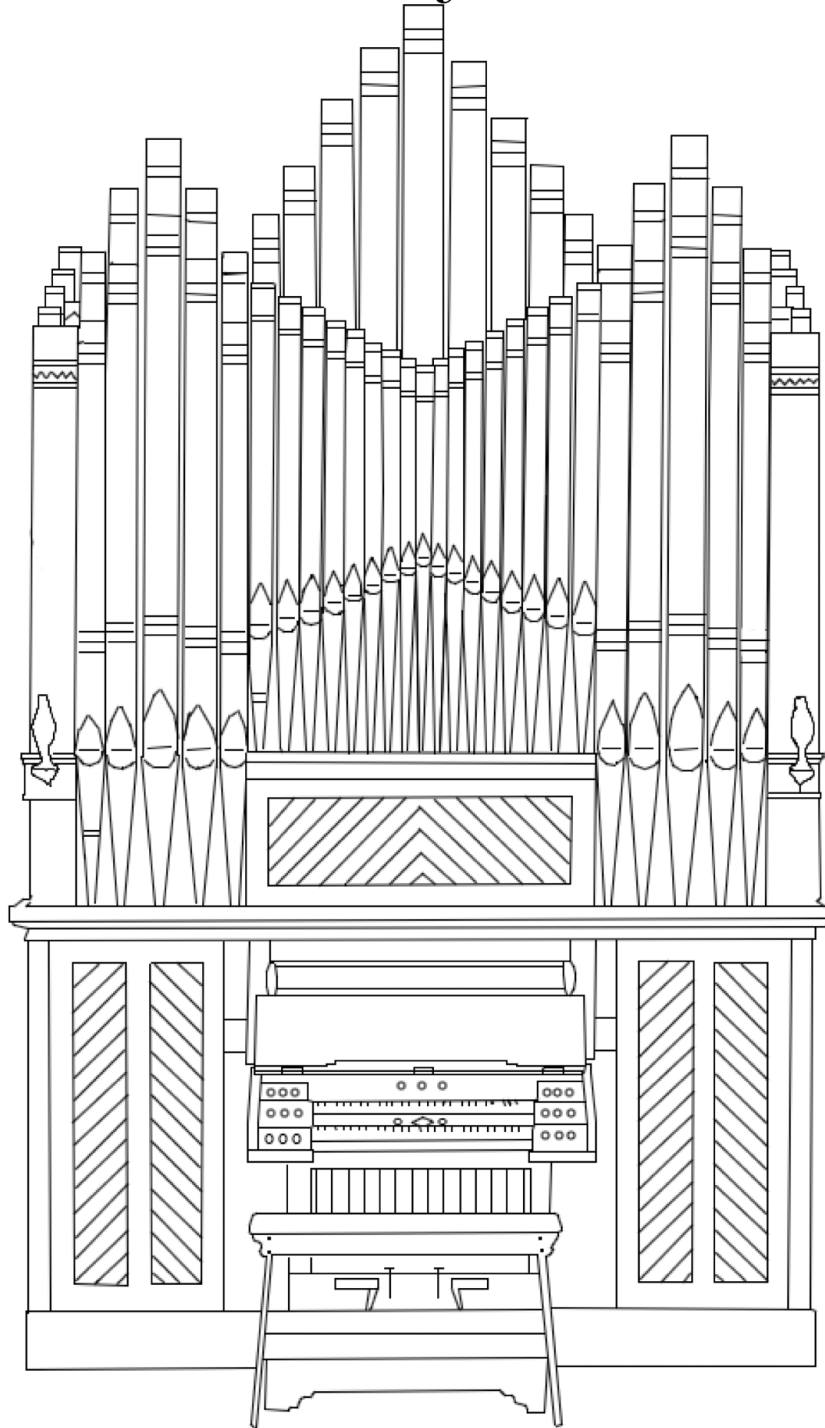
Countertops, Monuments, Banners, Signage, Vinyl Printing & More

BellMemorial.us | bellmemorials@nckcn.com | 785-738-2257

It Won't be Forgotten, if it's Set in Stone!

Oldest Church Pipe Organ in Kansas

Cawker City, Kansas



In 1886 the organ was built by Pilcher's Sons of Louisville, Kentucky for the congregational church in Kinsley, Kansas and was the only organ in Kansas west of Emporia at the time. Cawker City Methodists purchased the organ in 1931 and placed it in their church.



DEVORE



AUTO BODY & COLLISION

*In need of a tow and don't know where to go...
Did you go hunting in Kansas... with your car...
Call Devore Auto Body & Collision at 785-534-1982*

World's Largest Ball of Twine

Cawker City, Kansas



Originally created by Frank Stoeber in 1953, this famous Ball of Twine was the rolled twine from his farm's hay bales. Throughout his life, Stoeber continued to add to the ball until 1961, when the ball became too large for his barn. This is when the still growing ball was moved to its current location in Cawker City along Highway 24.



ES

EBERLE STUDIOS

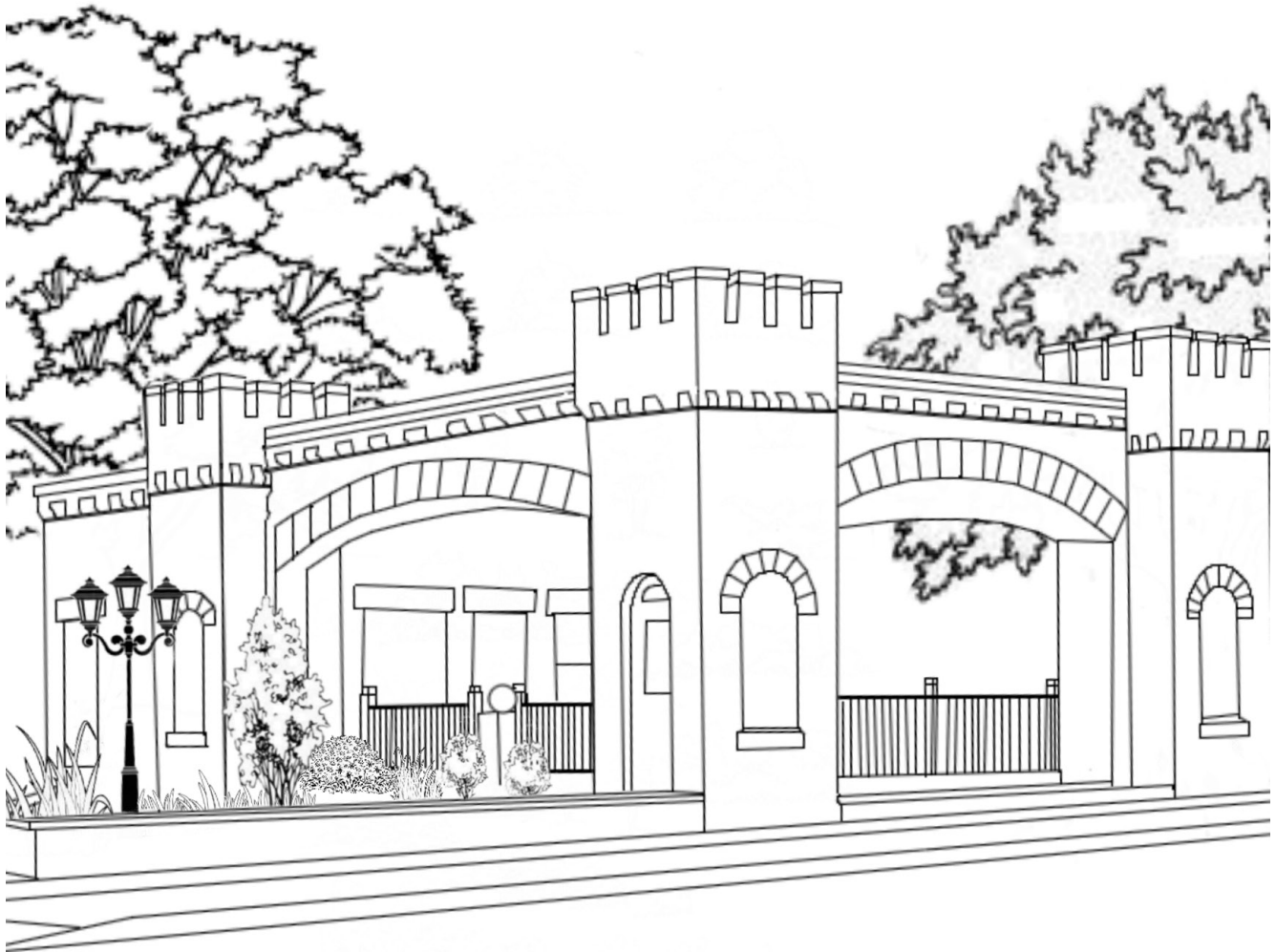
Capturing the Beauty in North Central Kansas

Portraits - Product Photography - Video

Cawker City | eberlestudios.com | Tel: 785.781.4525

Castle Service Station

Glen Elder, Kansas



The Castle Service Station was built by World War I veteran, Ernie Norris, in 1926 to resemble a castle he had observed in Luxemburg during the war. Constructed with native limestone the exterior of the castle showcases three spanning archways and is now a place of residence.



Internet | Cable | Telephone | Business Services

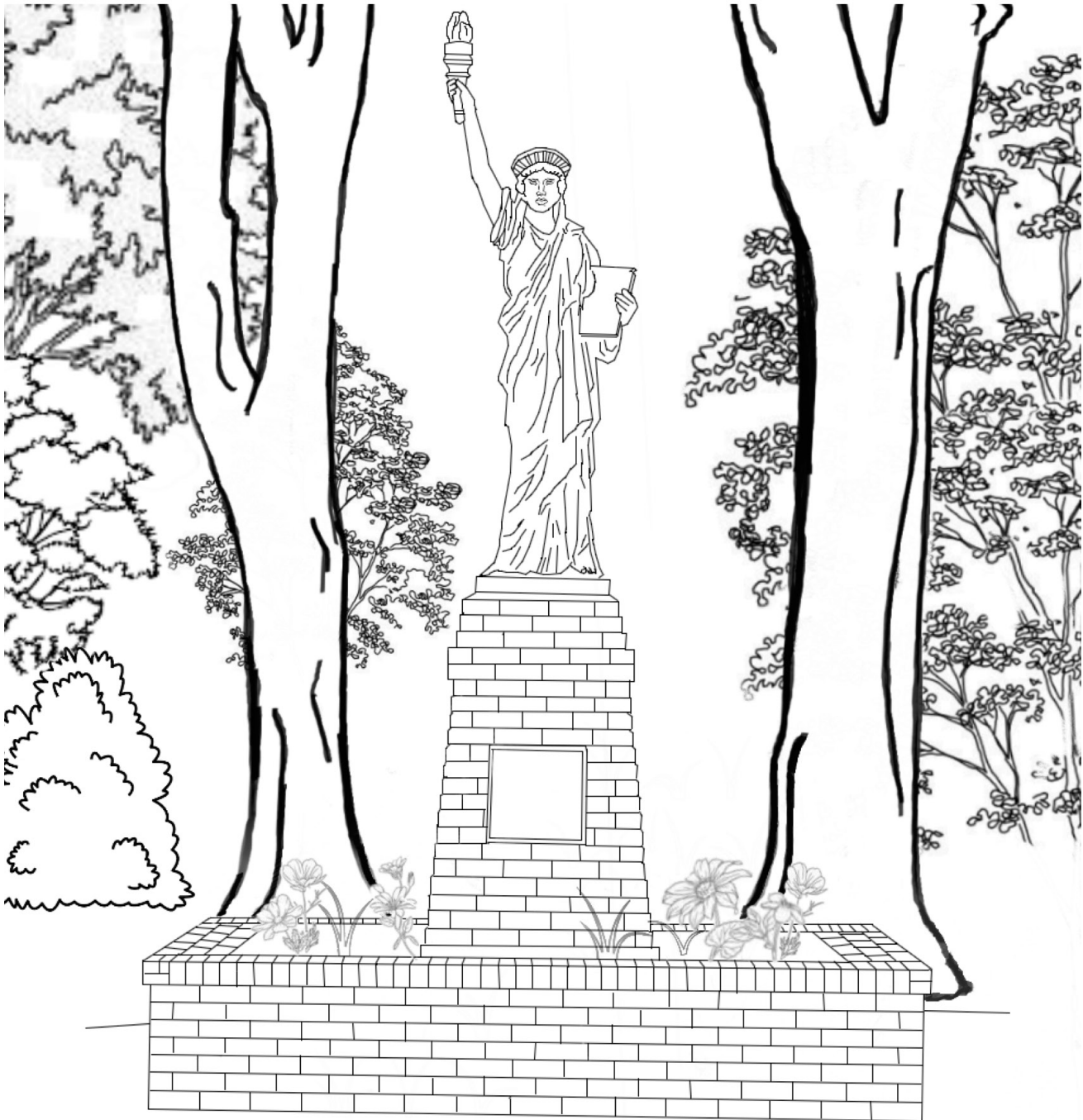
Serving North Central Kansas
cunninghamtelephoneandcable.com

Call: (800) 287-8495

Proud Sponsor of Complimentary WiFi at Glen Elder State Park!

Statue of Liberty

Glen Elder, Kansas



This symbolic statue is the centerpiece of the Wilson Neff Park in Glen Elder's town square. Lady Liberty was donated to the city in 1950 by Emily Slaven. Glen Elder's American Legion and Auxiliary, Post #143, worked together to provide the funds for the base of the statue.

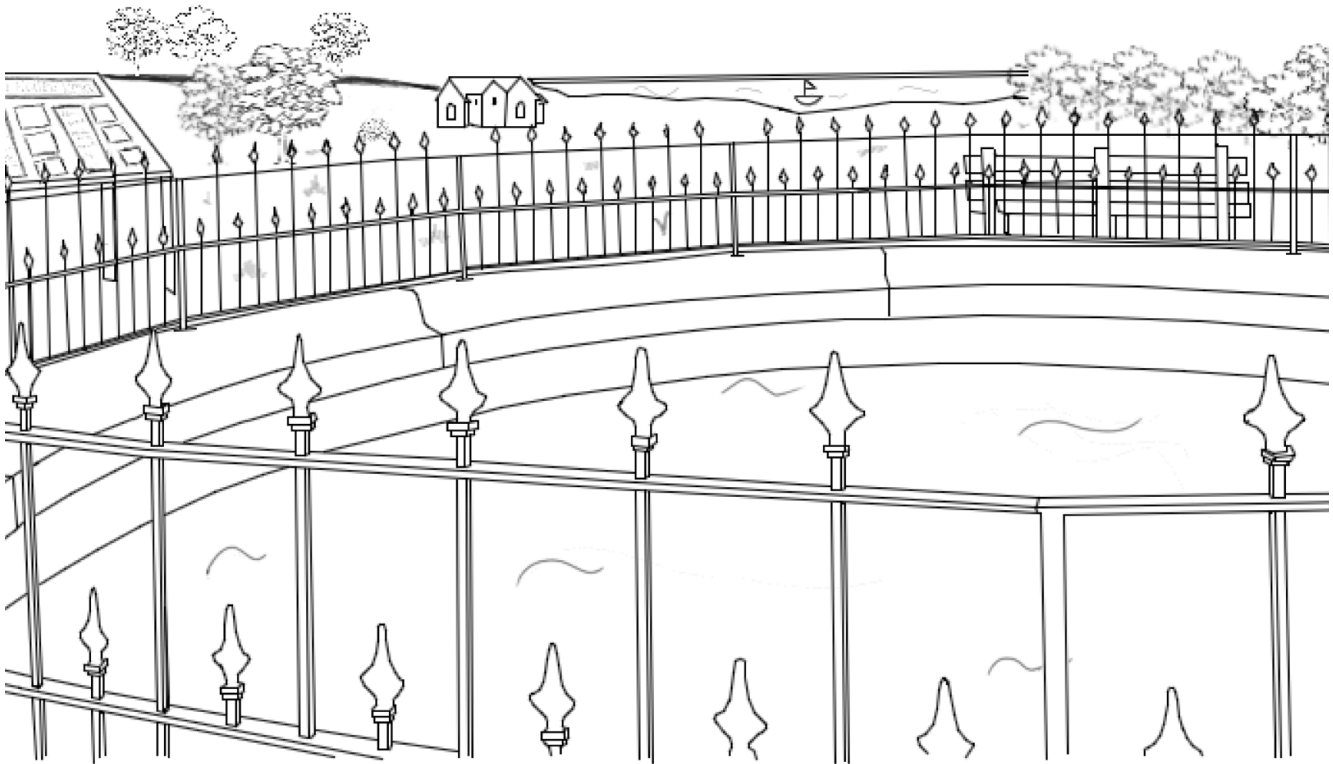


The Lazy H LakeView Campground - Year Round Sites Available!

Full Electric, Water, Sewer, & Free Wifi! Just north across from Waconda Lake!
Visit Us on Facebook - Call/text 785-545-6261 to book - 2174 Hwy 128, Glen Elder

Waconda Springs Replica

Glen Elder State Park, Kansas



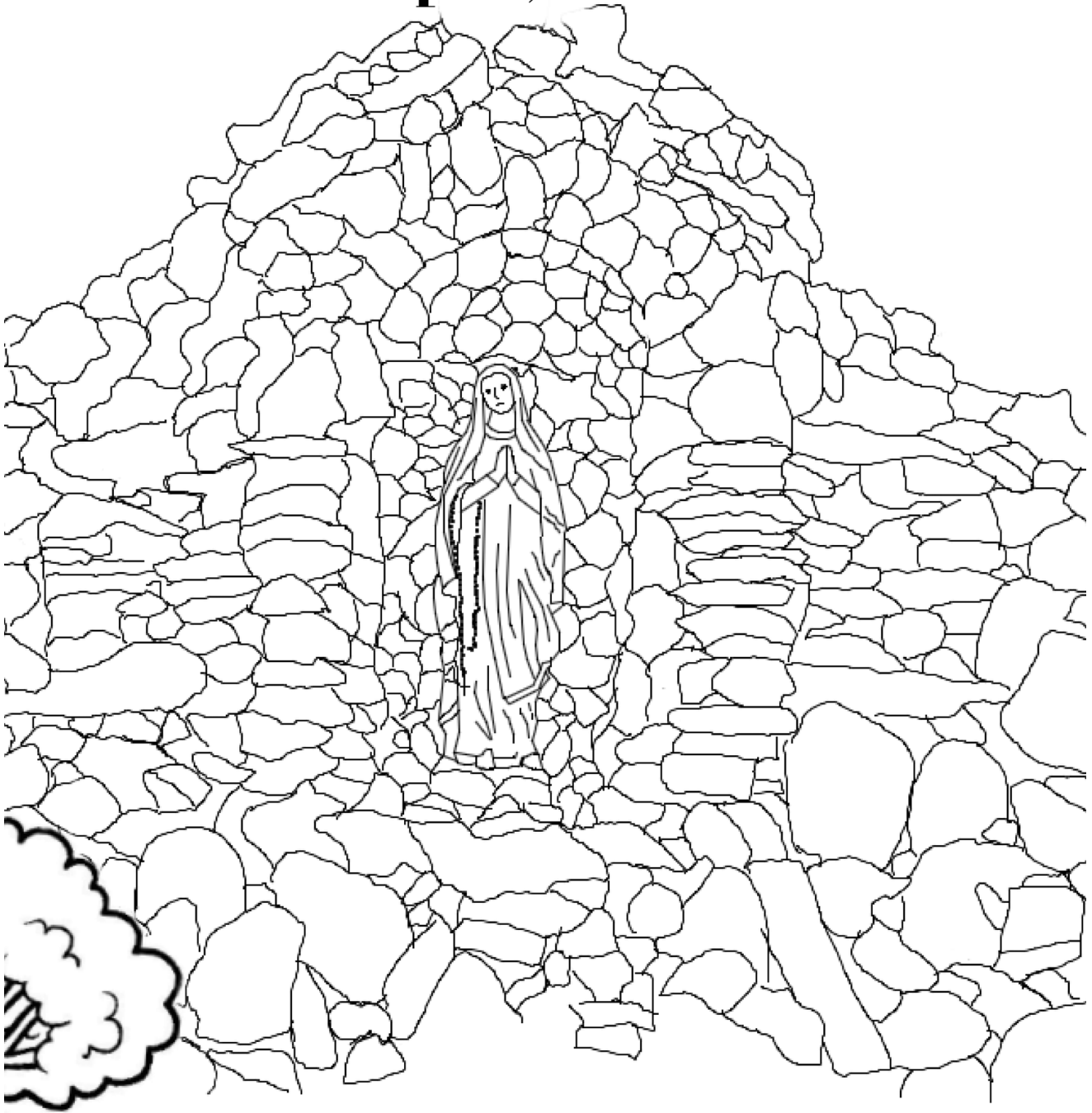
Waconda Lake's namesake is based on the famous Great Spirit Spring (known as Waconda Springs) and the legend of a Chief's daughter who died at the location. The spring, now covered by the lake, was located between Glen Elder and Cawker City, Kansas. The creation of the Waconda Springs replica was a project of Waconda Heritage Village, Inc., and Glen Elder State Park and was dedicated on June, 5, 2005.



The Best Way to Explore the Lake is on a Waconda Boat!
Largest Lund Boat Dealer in Kansas & Nebraska
WacondaBoats.com - Glen Elder - 785-545-3545

Grotto of Lourdes

Tipton, Kansas



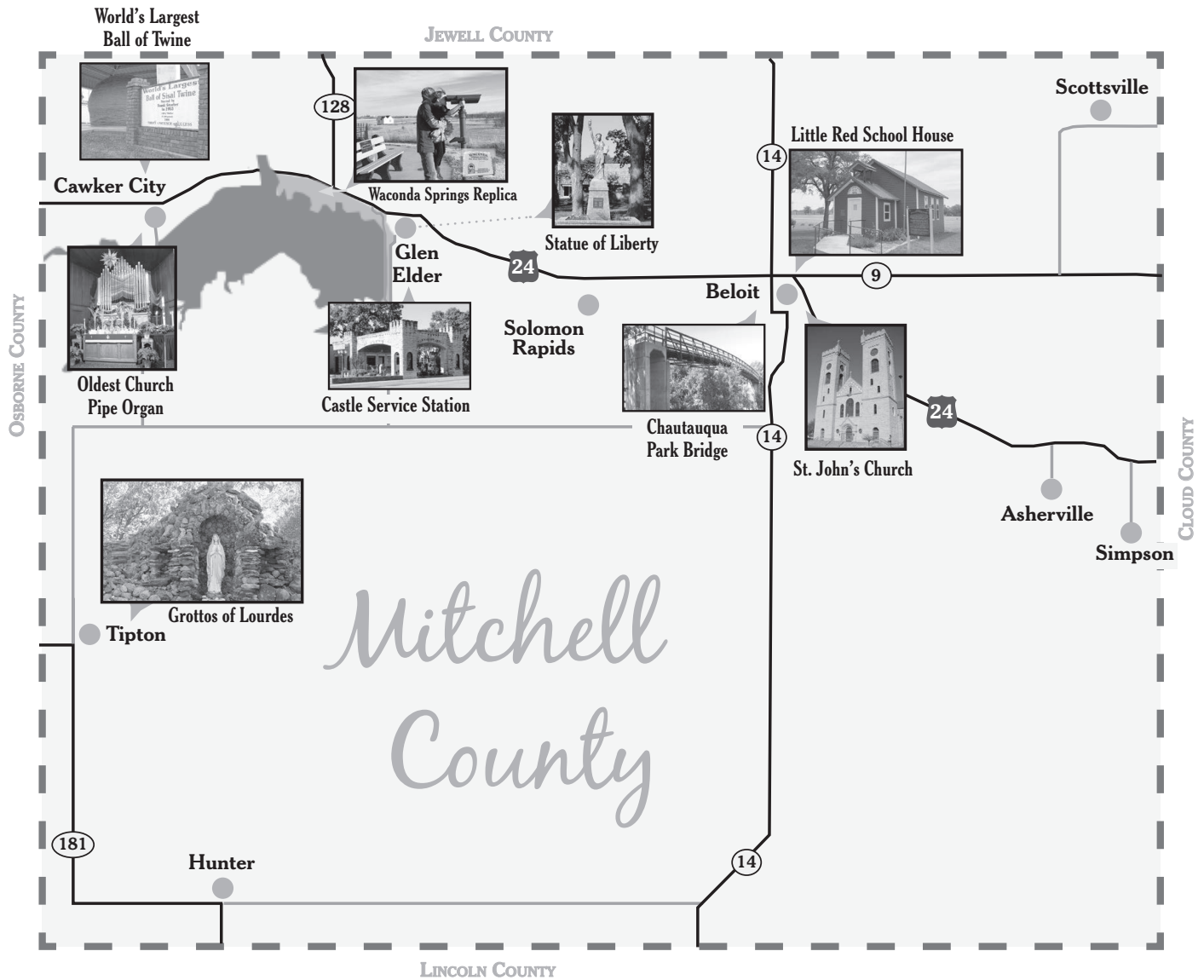
The Grotto is believed to have been built in 1934 and is located by the St. Boniface Catholic Church in Tipton. The original rocks used in the construction were collected from the surrounding Blue Hills, and it is believed that Father Menig brought rocks used in the grotto from Lourdes, France.



**Top Quality Pheasant Hunts in
North Central Kansas with Reasonable Rates**

Call to Book Now: 785-529-4081 - SpecialTHunting.com

MAP OF ATTRACTIONS



Mitchell County Convention & Tourism
www.visitmcks.com

Beloit Area Chamber of Commerce
www.beloitchamber.com

Kansas
www.travelks.com

BECKER
Autos & Trailers
& Camper SuperCenter

Where You're Treated the Best and Still Pay Less!

Call/Text 785-534-1227

Over 10 Acres of Inventory on Hwy 24 in Beloit! BeckerAutos.com

Explore, Dream, Live

OUR BLUE HILLS AND BLUE WATERS



Mitchell County Convention & Tourism



www.visitmcks.com

